

## Parkland Exchange in the City of Parksville

**PARKSVILLE, BC:** When Parksville voters go to the polls on November 19, 2011, they will be asked to approve a referendum that would change the designation of the land where the Parksville and District Visitor Centre (currently parkland) and the Craig Heritage Park Museum and Archives (currently a fee simple lot) are now located. The proposed exchange would move the parkland designation to the land occupied by the Craig Heritage Park Museum and Archives and move the fee simple lot designation to the land occupied by the Parksville and District Visitor Centre.

Voters will be asked to approve the referendum question, worded as follows:

*Are you in favour of the City of Parksville adopting Parkland Disposal and Exchange Bylaw No. 1475, 2011 to remove park dedication from the property at 1275 Island Highway East known as the Parksville and District Visitor Centre, in exchange for dedicating new parkland at 1245 Island Highway East, known as the Craig Heritage Park Museum and Archives.* **YES/NO**

The City of Parksville wishes to exchange City owned parkland where the Parksville and District Visitor Centre is located with the land where the Craig Heritage Park Museum and Archives is now located. The parcels of land are almost identical in size.

The City of Parksville is committed to maintaining parkland for its residents and realizes that residents place a high value on dedicated parkland. With this exchange of parkland, the future of the Craig Heritage Park Museum and Archives, which plays an important role in our community by preserving our past, will be protected for future generations.

Section 27 of the Community Charter Act of BC authorizes the City of Parksville by bylaw, to exchange land dedicated for park with other land suitable for a park or public square. The Craig Heritage Park Museum and Archives and Parksville Visitor Centre properties meet this requirement. Section 27 also requires the City obtain the approval of the electorate in order to proceed with the land exchange.

It is important to note there will be no cost to residents or taxpayers in the City of Parksville as a result of this exchange of parkland. As well, this exchange will not affect the operation of either facility, nor will it in anyway, change the Rotary Peace Park. This exchange is procedural only and is being done to protect the Craig Heritage Park Museum and Archives land and also enable the City of Parksville and the Visitor Centre to negotiate a new lease that meets current legal requirements.

To learn more about this referendum or for more information, we encourage residents to visit the City's website at [www.parksville.ca](http://www.parksville.ca). If there are questions, please phone 250 954-3070 or email your questions to [communications@parksville.ca](mailto:communications@parksville.ca).

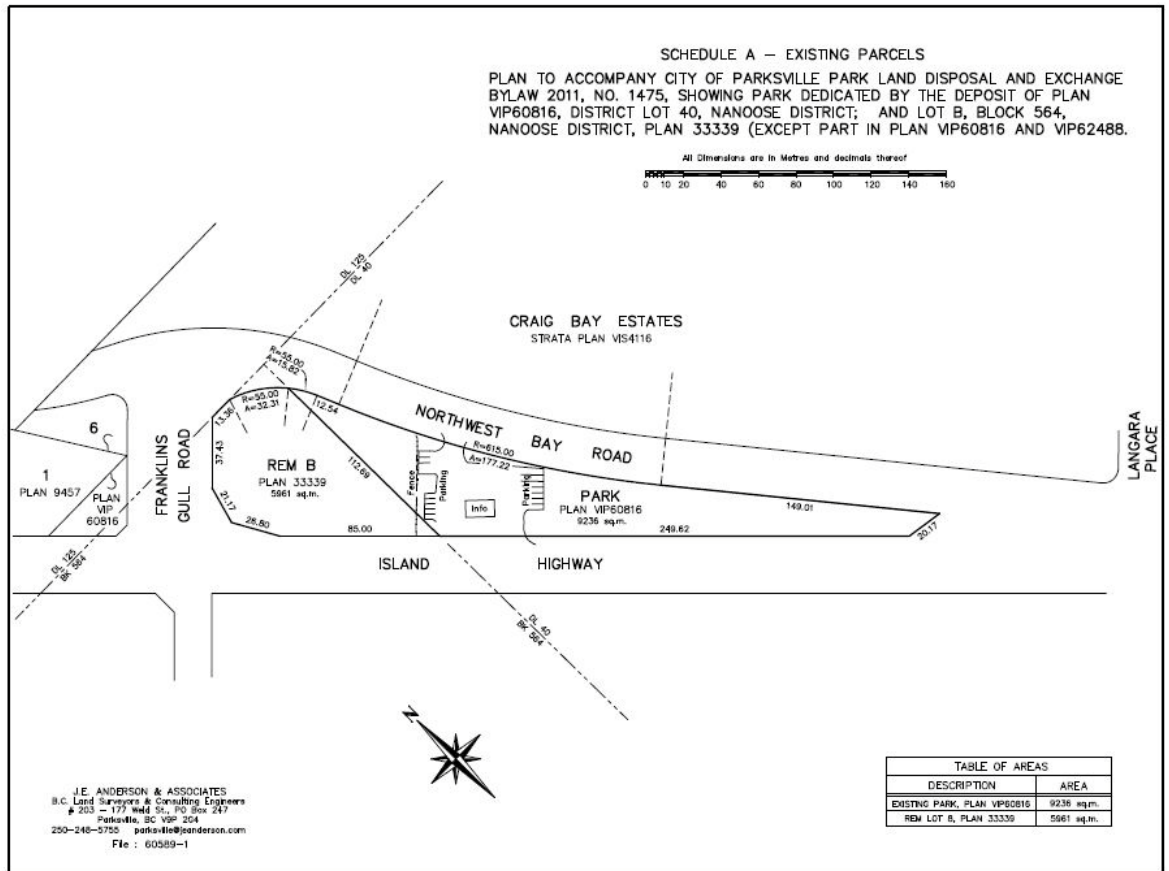
###

### CONTACT:

Debbie Comis, Director of Administrative Services	250 954-3068
Fred Manson, Chief Administrative Officer	250 954-4666

# Current designation at 1245 and 1275 Island Highway West

Craig Heritage Park Museum and Archives (currently a fee simple lot) and Parkville and District Visitor Centre (currently parkland).



# Proposed parkland exchange

Craig Heritage Park and Museum would be parkland and the Parkville and District Visitor Centre would become a fee simple lot. The Rotary Peace Park remains as parkland.

